

BULEET SHAPE OF ICE MAKER | 子弹头冰形制冰机



① ②

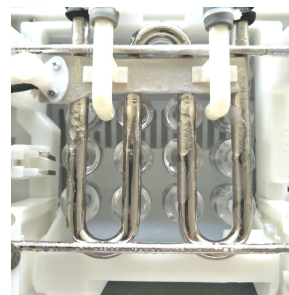
Ice shape:
冰的形状

冰的形状



③ ④ ⑤ ⑥

Ice making method:
制冰方式:



Certificate:
相关认证:



- High-efficiency refrigerating system with refrigerant :R290,energy conservation and enviromental | 高效制冷系统设计, R290制冷剂, 节能环保。
- Internal water-circulating system to make more transparent ice cube | 制冰盒内水循环系统, 增加冰块透明度。
- Cooling water reusing system to save energy | 制冰余水循环再利用, 高效节能
- Product shell is made of stainless steel materials ; 304#2B | 不锈钢外壳坚固耐用。
- New advanced self-checking controller to automatically control the process from water inlet -- ice making --- ice dropping --- ice storage --- ice full --- restart. | 从进水--制冰--脱冰--储冰--冰满停机--恢复再开机全自动控制。
- Accessory:1x Ice spoon.1 x Drain pipe.1x Tap water inlet pipe with 3/4 internal thread. | 附件: 冰勺, 进水管, 排水管各一件。

Model 型号:	① IM-20R2	② IM-20WR2	③ IM-26R2/④IM-45R2	⑤IM-26WR2/⑥IM-45WR2
Climate Type 气候类型:	T (+5--43°C)	T (+5--43°C)	T (+5--43°C)	T (+5--43°C)
Power supply 电源:	220-240V/50Hz	220-240V/50Hz	220-240V/50Hz	220-240V/50Hz
Capacity 制冰量: (kg/24h) (Ambient Temp. +15°C)	24 (Water Temp. +12°C)	24 (Water Temp. +12°C)	28/ 42 (Water Temp. +12°C)	28/ 45 (Water Temp. +12°C)
Type of cooling 冷却方式:	Air	Water	Air	Water
Ice storage (kg) 储冰量:	5 kg/9 Litres(升)	5 kg/9 Litres(升)	7 kg/13 Litres(升)	7 kg/13 Litres(升)
Pieces per cycle 每模冰颗数:	16	16	16 / 24	16 / 24
Ice cube weight 每颗冰重:	18.0g Roughly	18.0g Roughly	17.5g Roughly	17.5g Roughly
Eech ice size 冰块尺寸:	Ø28x40mm Roughly	Ø28x40mm Roughly	Ø27x40mm Roughly	Ø27x40mm Roughly
Inport Power 输入功率: (Under temperature. +43°C)	220W	230W	260W /280W	240W /280W
Rated Current 额定电流: (Under temperature. +43°C)	1.3 A	1.4 A	1.6 A/ 1.6A	1.4 A /1.6A
Product Size (WxDxH) 产品尺寸 (宽x深x高) :	330 x 472 x 580 mm	330 x 472 x 580 mm	398 x 512 x 610 mm	398 x 512 x 610 mm
Carton packing size(WxDxH) 纸箱包装尺寸 (宽x深x高) :	395 x 540 x 630 mm	395 x 540 x 630 mm	465 x 570 x 670 mm	465 x 570 x 670 mm
Water supply 水源: Presuure range (水压范围)	Connecting to tap water, 自来水 (0.1Mpa--0.35Mpa)	Connecting to tap water, 自来水 (0.1Mpa--0.35Mpa)	Connecting to tap water, 自来水 (0.1Mpa--0.35Mpa)	Connecting to tap water, 自来水 (0.1Mpa--0.35Mpa)
Water consumption 耗水量: (Under 0.2Mpa pressure)	1.2 (L/H) Roughly	28.0 (L/H) Roughly	1.3/2.1 (L/H) Roughly	29.0/32.0 (L/H) Roughly
N.W/G.W 净重/毛重:	21.8kg/24.3kg	21.8kg/24.3kg	25.3kg/28.2kg	25.3kg/28.2kg
Container Load: 装箱量: 20GP/40GP/40HC	168/360/480	168/360/480	144/300/400	144/300/400
Price (FOB Shanghai)	-----	-----	-----	-----

Air cooling products: Keep a 15cm ventilation space on both sides and backside, and do not cover the top or place it inside the cabinet for use.Clean the condenser once a year. | 左右保持15cm空间通风, 顶部上方不能遮挡, 不能放置在柜内使用,每年清洁冷凝器尘埃。

Water cooling products: Can be placed in the cabinet using, Ensure smooth drainage | 可以放置在柜内使用, 确保排水畅通。

冰爵电器科技 (苏州) 有限公司

地址: 江苏省常熟市虞山高新技术产业园, 阳光大道15号。
Email:djcs@263.net Tel:+86 13566066627

www.cn-icewoo.com www.en.cn-icewoo.com

ICEWOO ELECTRICAL TECHNOLOGY(SUZHOU) CO., LTD.

Add:No.15,Sunshine Avenue Yushan High-Tech industrial Park,Changshu,Jiangsu,China.
Email:djcs@263.net Tel:+86 13566066627

www.en.cn-icewoo.com www.cn-icewoo.com

BULEET SHAPE OF ICE MAKER | 子弹头冰形制冰机



① ② ③ ④

⑤ ⑥ ⑦ ⑧

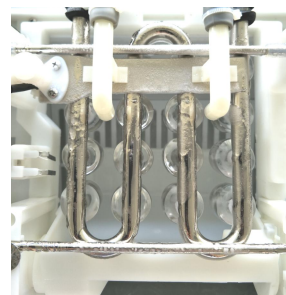
Ice shape:

冰的形状:



Ice making method:

制冰方式:



Certificate: 相关认证:



- High-efficiency refrigerating system with refrigerant :R290,energy conservation and enviromental | 高效制冷系统设计, R290制冷剂, 节能环保。
- Internal water-circulating system to make more transparent ice cube | 制冰盒内水循环系统, 增加冰块透明度。
- Cooling water reusing system to save energy | 制冰余水循环再利用, 高效节能
- Product shell is made of stainless steel materials ; 304#2B | 不锈钢外壳坚固耐用。
- New advanced self-checking controller to automatically control the process from water inlet -- ice making --- ice dropping --- ice storage --- ice full --- restart. | 从进水--制冰--脱冰--储冰--冰满停机--恢复再开机全自动控制。
- Accessory:1x Ice spoon.1 x Drain pipe.1x Tap water inlet pipe with 3/4 internal thread. | 附件: 冰勺, 进水管, 排水管各一件。

Model 型号:	① IM-25R2/②IM-50XR2	③ IM-25WR2/④IM-50XWR2	⑤IM-25AR2/⑥IM-50AR2	⑦IM-25AWR2/⑧IM-50AWR2
Climate Type 气候类型:	T (+5--43°C)	T (+5--43°C)	T (+5--43°C)	T (+5--43°C)
Power supply 电源:	220-240V/50Hz	220-240V/50Hz	220-240V/50Hz	220-240V/50Hz
Capacity 制冰量: (kg/24h) (Ambient Temp. +15°C)	28/52 (Water Temp. +12°C)	28/52 (Water Temp. +12°C)	28/ 56 (Water Temp. +12°C)	28/ 56 (Water Temp. +12°C)
Type of cooling 冷却方式:	Air	Water	Air	Water
Ice storage (kg) 储冰量:	7 kg/13 Litres(升)	7 kg/13 Litres(升)	14 kg/27 Litres(升)	14kg/27 Litres(升)
Pieces per cycle 每模冰颗数:	16/24	16/24	16 / 24	16 / 24
Ice cube weight 每颗冰重:	18.0g Roughly	18.0g Roughly	17.5g Roughly	17.5g Roughly
Eech ice size 冰块尺寸:	Ø28x40mm Roughly	Ø28x40mm Roughly	Ø27x40mm Roughly	Ø27x40mm Roughly
Inport Power 输入功率: (Under temperature. +43°C)	260W/350W	230W/380W	260W/350W	230W /380W
Rated Current 额定电流: (Under temperature. +43°C)	1.6A/2.0 A	1.4 A/2.4A	1.6 A/ 2.0A	1.4 A /2.4A
Product Size (WxDxH) 产品尺寸 (宽x深x高) :	398 x 512 x 670 mm	398 x 512 x 670 mm	398 x 512 x 788 mm	398 x 512 x 788 mm
Carton packing size(WxDxH) 纸箱包装尺寸 (宽x深x高) :	465 x 570 x 735 mm	465 x 570 x 735 mm	465 x 570 x 840 mm	465 x 570 x 840 mm
Water supply 水源: Presuure range (水压范围)	Connecting to tap water, 自来水 (0.1Mpa--0.35Mpa)	Connecting to tap water, 自来水 (0.1Mpa--0.35Mpa)	Connecting to tap water, 自来水 (0.1Mpa--0.35Mpa)	Connecting to tap water, 自来水 (0.1Mpa--0.35Mpa)
Water consumption 耗水量: (Under 0.2Mpa pressure)	1.3/2.1 (L/H) Probably	29.0/38.0 (L/H) Probably	1.3/2.1 (L/H) Probably	29.0/38.0 (L/H) Probably
N.W/G.W 净重/毛重:	28.2kg/31.0kg	28.2kg/31.0kg	27.4kg/30.4kg	27.4kg/30.4kg
Container Load: 装箱量: 20GP/40GP/40HC	144/300/400	144/300/400	96/200/300	96/200/300
Price (FOB Shanghai)	-----	-----	-----	-----

Air cooling products: Keep a 15cm ventilation space on both sides and backside, and do not cover the top or place it inside the cabinet for use.Clean the condenser once a year. | 左右保持15cm空间通风, 顶部上方不能遮挡, 不能放置在柜内使用,每年清洁冷凝器尘埃。

Water cooling products: Can be placed in the cabinet using, Ensure smooth drainage | 可以放置在柜内使用, 确保排水畅通。

冰爵电器科技 (苏州) 有限公司

地址: 江苏省常熟市虞山高新技术产业园, 阳光大道15号。

Email:djjcs@263.net Tel:+86 13566066627

www.cn-icewoo.com www.en.cn-icewoo.com

ICEWOO ELECTRICAL TECHNOLOGY(SUZHOU) CO., LTD.

Add.No.15,Sunshine Avenue Yushan High-Tech industrial Park,Changshu,Jiangsu,China.

Email:djjcs@263.net Tel:+86 13566066627

www.cn-icewoo.com www.en.cn-icewoo.com

BULEET SHAPE OF ICE MAKER | 子弹头冰形制冰机



① ② ③ ④

⑤ ⑥ ⑦ ⑧

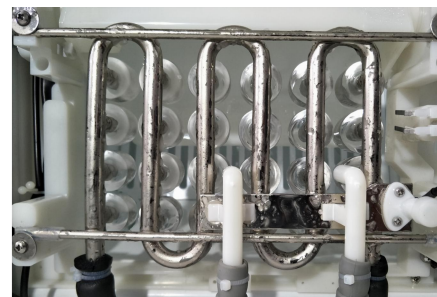
Ice shape:

冰的形状:



Ice making method:

制冰方式:



Certificate:
相关认证:



- High-efficiency refrigerating system with refrigerant :R290,energy conservation and enviromental | 高效制冷系统设计, R290制冷剂, 节能环保。
- Internal water-circulating system to make more transparent ice cube | 制冰盒内水循环系统, 增加冰块透明度。
- Cooling water reusing system to save energy | 制冰余水循环再利用, 高效节能
- Product shell is made of stainless steel materials ; 304#2B | 不锈钢外壳坚固耐用。
- New advanced self-checking controller to automatically control the process from water inlet -- ice making --- ice dropping --- ice storage --- ice full --- restart. | 从进水--制冰--脱冰--储冰--冰满停机--恢复再开机全自动控制。
- Accessory:1x Ice spoon.1 x Drain pipe.1x Tap water inlet pipe with 3/4 internal thread. | 附件: 冰勺, 进水管, 排水管各一件。

Model 型号:	① IM-52LR2/②IM-62LR2	③ IM-52LWR2/④IM-82LWR2	⑤IM-50FR2/⑥IM-60FR2	⑦IM-60FWR2/⑧IM-80FWR2
Climate Type 气候类型:	T (+5--43°C)	T (+5--43°C)	T (+5--43°C)	T (+5--43°C)
Power supply 电源:	220-240V/50Hz	220-240V/50Hz	220-240V/50Hz	220-240V/50Hz
Capacity 制冰量: (kg/24h) (Ambient Temp. +15°C)	52/60 (Water Temp. +12°C)	52/80 (Water Temp. +12°C)	52/ 60 (Water Temp. +12°C)	60/80 (Water Temp. +12°C)
Type of cooling 冷却方式:	Air	Water	Air	Water
Ice storage (kg) 储冰量:	16 kg/30 Litres(升)	16 kg/30 Litres(升)	16 kg/30 Litres(升)	16 kg/30 Litres(升)
Pieces per cycle 每模冰颗数:	24/24	24/32	24 / 24	24 / 32
Ice cube weight 每颗冰重:	20.0g Roughly	20.0g Roughly	20.0g Roughly	20.0g Roughly
Eech ice size 冰块尺寸:	Ø28x41mm Roughly	Ø28x41mm Roughly	Ø28x41mm Roughly	Ø28x41mm Roughly
Inport Power 输入功率: (Under temperature. +43°C)	350W/400W	380W/500W	350W/400W	380W /500W
Rated Current 额定电流: (Under temperature. +43°C)	2.0A/2.5 A	2.4 A/3.0A	2.0 A/ 2.5A	2.4 A /3.0A
Product Size (WxDxH) 产品尺寸 (宽x深x高) :	548 x 572 x 670 mm	548 x 572 x 670 mm	548 x 612 x 820 mm	548 x 612 x 820 mm
Carton packing size(WxDxH) 纸箱包装尺寸 (宽x深x高) :	620 x 645 x 745 mm	620 x 645 x 745 mm	620 x 680 x 880 mm	620 x 680 x 880 mm
Water supply 水源: Presuure range (水压范围)	Connecting to tap water, 自来水 (0.1Mpa--0.35Mpa)	Connecting to tap water, 自来水 (0.1Mpa--0.35Mpa)	Connecting to tap water, 自来水 (0.1Mpa--0.35Mpa)	Connecting to tap water, 自来水 (0.1Mpa--0.35Mpa)
Water consumption 耗水量: (Under 0.2Mpa pressure)	2.1/2.1 (L/H) Probably	38.0/42.0 (L/H) Probably	2.1/2.1 (L/H) Probably	38.0/42.0 (L/H) Probably
N.W/G.W 净重/毛重:	36.0kg/40.0kg	36.0kg/40.0kg	40.0kg/43.5kg	40.0kg/44.0kg
Container Load: 装箱量: 20GP/40GP/40HC	81/171/171	81/171/171	54/114/171	54/114/171
Price (FOB Shanghai)	-----	-----	-----	-----

Air cooling products: Keep a 15cm ventilation space on both sides and backside, and do not cover the top or place it inside the cabinet for use.Clean the condenser once a year. | 左右保持15cm空间通风, 顶部上方不能遮挡, 不能放置在柜内使用,每年清洁冷凝器尘埃。

Water cooling products: Can be placed in the cabinet using, Ensure smooth drainage | 可以放置在柜内使用, 确保排水畅通。

冰爵电器科技 (苏州) 有限公司

地址: 江苏省常熟市虞山高新技术产业园, 阳光大道15号.

Email:djjcs@263.net Tel:+86 13566066627

www.cn-icewoo.com www.en.cn-icewoo.com

ICEWOO ELECTRICAL TECHNOLOGY(SUZHOU) CO., LTD.

Add.No.15,Sunshine Avenue Yushan High-Tech industrial Park,Changshu,Jiangsu,China.

Email:djjcs@263.net Tel:+86 13566066627

www.cn-icewoo.com www.en.cn-icewoo.com

BULEET SHAPE OF ICE MAKER | 子弹头冰形制冰机



① ②

③

④ ⑤

Ice shape:

冰的形状:



Ice making method:

制冰方式:



Certificate:
相关认证:



- High-efficiency refrigerating system with refrigerant :R290,energy conservation and enviromental | 高效制冷系统设计, R290制冷剂, 节能环保。
- Internal water-circulating system to make more transparent ice cube | 制冰盒内水循环系统, 增加冰块透明度。
- Cooling water reusing system to save energy | 制冰余水循环再利用, 高效节能
- Product shell is made of stainless steel materials ; 304#2B | 不锈钢外壳坚固耐用。
- New advanced self-checking controller to automatically control the process from water inlet -- ice making --- ice dropping --- ice storage --- ice full --- restart. | 从进水--制冰--脱冰--储冰--冰满停机--恢复再开机全自动控制。
- Accessory:1x Ice spoon.1 x Drain pipe.1x Tap water inlet pipe with 3/4 internal thread. | 附件: 冰勺, 进水管, 排水管各一件。

Model 型号:	① IM-60AR2/②IM-80AR2	③ IM-100DR2	④IM-100AR2/⑤IM-120AR2
Climate Type 气候类型:	T (+5--43°C)	T (+5--43°C)	T (+5--43°C)
Power supply 电源:	220-240V/50Hz	220-240V/50Hz	220-240V/50Hz
Capacity 制冰量: (kg/24h) (Ambient Temp. +15°C)	60/80 (Water Temp. +12°C)	100 (Water Temp. +12°C)	100/ 120 (Water Temp. +12°C)
Type of cooling 冷却方式:	Air	Air	Air
Ice storage (kg) 储冰量:	25 kg/52 Litres(升)	50 kg/100 Litres(升)	50 kg/100 Litres(升)
Pieces per cycle 每模冰颗数:	24/32	32	24x2=48
Ice cube weight 每颗冰重:	19.0g Roughly	19.0g Roughly	19.0g Roughly
Eech ice size 冰块尺寸:	Ø27x41mm Roughly	Ø27x41mm Roughly	Ø27x41mm Roughly
Inport Power 输入功率: (Under temperature. +43°C)	410W/550W	580W	680W/820W
Rated Current 额定电流: (Under temperature. +43°C)	2.5A/3.3 A	3.3A	4.0 A/ 5.0A
Product Size (WxDxH) 产品尺寸 (宽x深x高) :	500 x 612 x 914 mm	680 x 612 x 1050 mm	680 x 612 x 1050 mm
Carton packing size(WxDxH) 纸箱包装尺寸 (宽x深x高) :	580 x 685 x 960 mm	800 x 730 x 1200 mm	800 x 730 x 1200 mm
Water supply 水源: Presuure range (水压范围)	Connecting to tap water, 自来水 (0.1Mpa--0.35Mpa)	Connecting to tap water, 自来水 (0.1Mpa--0.35Mpa)	Connecting to tap water, 自来水 (0.1Mpa--0.35Mpa)
Water consumption 耗水量: (Under 0.2Mpa pressure)	2.1/1.7 (L/H) Probably	1.7 (L/H) Probably	3.6/3.6 (L/H) Probably
N.W/G.W 净重/毛重:	43.6kg/48.3kg	63.0kg/82.0kg	65.0kg/85.0kg
Container Load: 装箱量: 20GP/40GP/40HC	64/136/136	21/42/84	21/42/84
Price (FOB Shanghai)	-----	-----	-----

Air cooling products: Keep a 15cm ventilation space on both sides and backside, and do not cover the top or place it inside the cabinet for use.Clean the condenser once a year. | 左右保持15cm空间通风, 顶部上方不能遮挡, 不能放置在柜内使用,每年清洁冷凝器尘埃。

Water cooling products: Can be placed in the cabinet using, Ensure smooth drainage | 可以放置在柜内使用, 确保排水畅通。

冰爵电器科技 (苏州) 有限公司

地址: 江苏省常熟市虞山高新技术产业园, 阳光大道15号。

Email:djjcs@263.net Tel:+86 13566066627

www.cn-icewoo.com www.en.cn-icewoo.com

ICEWOO ELECTRICAL TECHNOLOGY(SUZHOU) CO., LTD.

Add.No.15,Sunshine Avenue Yushan High-Tech industrial Park,Changshu,Jiangsu,China.

Email:djjcs@263.net Tel:+86 13566066627

www.cn-icewoo.com www.en.cn-icewoo.com

FLAKE ICE MAKER | 矿物盐状碎冰制冰机



① ②

Ice shape:
冰的形状:

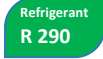


③ ④

Ice making method:
制冰方式:



Certificate:
相关认证:



- High-efficiency refrigerating system with refrigerant :R290,energy conservation and enviromental | 高效制冷系统设计，R290制冷剂，节能环保。
- Continuous making ice by screw reamer extrusion , widely used in scientific researchlaboratory,aquatic product freshening.
| 不间断连续地用螺杆铰刀方式挤压出冰，广泛用于科学研究实验室，水产品保鲜。。
- Automatic detection function, automatic protection and display of failure, extend the life of other components.
| 全自动检测功能，发生故障自动保护并显示，延长其他部件寿命。
- Product shell is made of stainless steel materials ; 304#2B | 不锈钢外壳坚固耐用。
- New advanced self-checking controller to automatically control the process from water inlet -- ice making --- ice dropping --- ice storage --- ice full --- restart. | 从进水--制冰--脱冰--储冰--冰满停机--恢复再开机全自动控制。
- Accessory:1x Ice spoon.1 x Drain pipe.1x Tap water inlet pipe with 3/4 internal thread. | 附件：冰勺，进水管，排水管各一件。

Model 型号:	① IMS-30R2	② IMS-30WR2	③ IMS-50R2	④ IMS-50WR2
Climate Type 气候类型:	T (+5--43°C)	T (+5--43°C)	T (+5--43°C)	T (+5--43°C)
Power supply 电源:	220-240V/50Hz	220-240V/50Hz	220-240V/50Hz	220-240V/50Hz
Capacity 制冰量: (kg/24h) (Ambient Temp. +15°C)	45 (Water Temp. +12°C)	45 (Water Temp. +12°C)	55 (Water Temp. +12°C)	55 (Water Temp. +12°C)
Type of cooling 冷却方式:	Air	Water	Air	Water
Ice storage (kg) 储冰量:	5 kg/9 Litres(升)	5 kg/9 Litres(升)	7 kg/13 Litres(升)	7 kg/13 Litres(升)
Ice produce method 产冰方式	Continuously/连续出冰	Continuously/连续出冰	Continuously/连续出冰	Continuously/连续出冰
Ice cube weight 每颗冰重:	0.02~0.25g Roughly	0.02~0.25g Roughly	0.02~0.25g Roughly	0.02~0.25g Roughly
Inport Power 输入功率: (Under temperature. +43°C)	260W	250W	280W	280W
Rated Current 额定电流: (Under temperature. +43°C)	1.6 A	1.6A	1.6A	1.6A
Product Size (WxDxH) 产品尺寸 (宽x深x高):	330 x 472 x 580 mm	330 x 472 x 580 mm	398 x 512 x 720 mm	398 x 512 x 720 mm
Carton packing size(WxDxH) 纸箱包装尺寸 (宽x深x高):	395 x 540 x 630 mm	395 x 540 x 630 mm	465 x 570 x 780 mm	465 x 570 x 780 mm
Water supply 水源: Presuure range (水压范围)	Connecting to tap water, 自来水 (0.1Mpa--0.35Mpa)	Connecting to tap water, 自来水 (0.1Mpa--0.35Mpa)	Connecting to tap water, 自来水 (0.1Mpa--0.35Mpa)	Connecting to tap water, 自来水 (0.1Mpa--0.35Mpa)
Water consumption 耗水量: (Under 0.2Mpa pressure)	0.0 (L/H) Probably	27.0 (L/H) Probably	0.0 (L/H) Probably	30.0 (L/H) Probably
N.W/G.W 净重/毛重:	25.1kg/27.3kg	25.3kg/27.6kg	34.0kg/37.2kg	31.5kg/34.7kg
Container Load: 装箱量: 20GP/40GP/40HC	168/360/480	168/360/480	144/300/300	144/300/300
Price (FOB Shanghai)	-----	-----	-----	-----

Brief description | 简要提示:

Air cooling products: Keep a 15cm ventilation space on both sides and backside, and do not cover the top or place it inside the cabinet for use.Clean the condenser once a year. | 左右保持15cm空间通风，顶部上方不能遮挡，不能放置在柜内使用，每年清洁冷凝器尘埃。

Water cooling products: Can be placed in the cabinet using, Ensure smooth drainage | 可以放置在柜内使用，确保排水畅通。

冰爵电器科技 (苏州) 有限公司

地址: 江苏省常熟市虞山高新技术产业园, 阳光大道15号.
Email:djjcs@263.net Tel:+86 13566066627

www.cn-icewoo.com www.en.cn-icewoo.com

ICEWOO ELECTRICAL TECHNOLOGY(SUZHOU) CO., LTD.

Add:No.15,Sunshine Avenue Yushan High-Tech industrial Park,Changshu,Jiangsu,China.
Email:djjcs@263.net Tel:+86 13566066627

www.cn-icewoo.com www.en.cn-icewoo.com

FLAKE ICE MAKER | 矿物盐状碎冰制冰机



① ② ③ ④

Ice shape:
冰的形状:

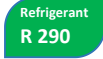


⑤ ⑥

Ice making method:
制冰方式:



Certificate:
相关认证:



- High-efficiency refrigerating system with refrigerant :R290,energy conservation and enviromental | 高效制冷系统设计, R290制冷剂, 节能环保。
- Continuous making ice by screw reamer extrusion , widely used in scientific researchlaboratory,aquatic product freshening.
| 不间断连续地用螺杆铰刀方式挤压出冰,广泛用于科学研究实验室,水产品保鲜。。
- Automatic detection function, automatic protection and display of failure, extend the life of other components.
| 全自动检测功能, 发生故障自动保护并显示, 延长其他部件寿命。
- Product shell is made of stainless steel materials ; 304#2B | 不锈钢外壳坚固耐用。
- New advanced self-checking controller to automatically control the process from water inlet -- ice making --- ice dropping --- ice storage --- ice full --- restart. | 从进水--制冰--脱冰--储冰--冰满停机--恢复再开机全自动控制。
- Accessory:1x Ice spoon.1 x Drain pipe.1x Tap water inlet pipe with 3/4 internal thread. | 附件: 冰勺, 进水管, 排水管各一件。

Model 型号:	①IMS-60R2/②IMS-85R2	③IMS-60WR2/④IMS-85WR2	⑤ IMS-90FR2	⑥IMS-90FWR2
Climate Type 气候类型:	T (+5--43°C)	T (+5--43°C)	T (+5--43°C)	T (+5--43°C)
Power supply 电源:	220-240V/50Hz	220-240V/50Hz	220-240V/50Hz	220-240V/50Hz
Capacity 制冰量: (kg/24h) (Ambient Temp. +15°C)	60/85 (Water Temp. +12°C)	60/85 (Water Temp. +12°C)	100 (Water Temp. +12°C)	100 (Water Temp. +12°C)
Type of cooling 冷却方式:	Air	Water	Air	Water
Ice storage (kg) 储冰量:	12 kg/28 Litres(升)	12 kg/28 Litres(升)	16 kg/32 Litres(升)	16 kg/32 Litres(升)
Ice produce method 产冰方式	Continuously/连续出冰	Continuously/连续出冰	Continuously/连续出冰	Continuously/连续出冰
Ice cube weight 每颗冰重:	0.02~0.25g Roughly	0.02~0.25g Roughly	0.02~0.25g Roughly	0.02~0.25g Roughly
Inport Power 输入功率: (Under temperature. +43°C)	260/400W	250/380W	400W	380W
Rated Current 额定电流: (Under temperature. +43°C)	1.6 /2.5A	1.6/2.4A	2.5A	2.4A
Product Size (WxDxH) 产品尺寸 (宽x深x高) :	398 x 512 x 838 mm	398 x 512 x 838 mm	548 x 572 x 725 mm	548 x 572 x 725 mm
Carton packing size(WxDxH) 纸箱包装尺寸 (宽x深x高) :	465 x 570 x 885 mm	465 x 570 x 885 mm	620 x 640 x 780 mm	620 x 640 x 780 mm
Water supply 水源: Presuure range (水压范围)	Connecting to tap water, 自来水 (0.1Mpa--0.35Mpa)	Connecting to tap water, 自来水 (0.1Mpa--0.35Mpa)	Connecting to tap water, 自来水 (0.1Mpa--0.35Mpa)	Connecting to tap water, 自来水 (0.1Mpa--0.35Mpa)
Water consumption 耗水量: (Under 0.2Mpa pressure)	0.0 (L/H) Probably	31.0 (L/H) Probably	0.0 (L/H) Probably	31.0 (L/H) Probably
N.W/G.W 净重/毛重:	38.0kg/41.5kg	38.0kg/41.5kg	47.0kg/52kg	31.5kg/34.7kg
Container Load: 装箱量: 20GP/40GP/40HC	96/200/300	96/200/300	81/171/171	81/171/171
Price (FOB Shanghai)	-----	-----	-----	-----

Brief description | 简要提示:

Air cooling products: Keep a 15cm ventilation space on both sides and backside, and do not cover the top or place it inside the cabinet for use.Clean the condenser once a year. | 左右保持15cm空间通风, 顶部上方不能遮挡, 不能放置在柜内使用,每年清洁冷凝器尘埃。

Water cooling products: Can be placed in the cabinet using, Ensure smooth drainage | 可以放置在柜内使用, 确保排水畅通。

冰爵电器科技 (苏州) 有限公司

地址: 江苏省常熟市虞山高新技术产业园, 阳光大道15号.
Email:djjcs@263.net Tel:+86 13566066627

www.cn-icewoo.com www.en.cn-icewoo.com

ICEWOO ELECTRICAL TECHNOLOGY(SUZHOU) CO., LTD.

Add:No.15,Sunshine Avenue Yushan High-Tech industrial Park,Changshu,Jiangsu,China.
Email:djjcs@263.net Tel:+86 13566066627

www.cn-icewoo.com www.en.cn-icewoo.com

FLAKE ICE MAKER | 矿物盐状碎冰制冰机



① ② ③

Ice shape:
冰的形状:

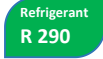


④ ⑤

Ice making method:
制冰方式:



Certificate:
相关认证:



- High-efficiency refrigerating system with refrigerant :R290,energy conservation and enviromental | 高效制冷系统设计, R290制冷剂, 节能环保。
- Continuous making ice by screw reamer extrusion , widely used in scientific researchlaboratory,aquatic product freshening.
| 不间断连续地用螺杆铰刀方式挤压出冰,广泛用于科学研究实验室,水产品保鲜。。
- Automatic detection function, automatic protection and display of failure, extend the life of other components.
| 全自动检测功能, 发生故障自动保护并显示, 延长其他部件寿命。
- Product shell is made of stainless steel materials ; 304#2B | 不锈钢外壳坚固耐用。
- New advanced self-checking controller to automatically control the process from water inlet -- ice making --- ice dropping --- ice storage --- ice full --- restart. | 从进水--制冰--脱冰--储冰--冰满停机--恢复再开机全自动控制。
- Accessory:1x Ice spoon.1 x Drain pipe.1x Tap water inlet pipe with 3/4 internal thread. | 附件: 冰勺, 进水管, 排水管各一件。

Model 型号:	①IMS-100R2	②IMS-130R2/③IMS-150R2	④IMS-180R2	⑤IMS-250R2
Climate Type 气候类型:	T (+5--43°C)	T (+5--43°C)	T (+5--43°C)	T (+5--43°C)
Power supply 电源:	220-240V/50Hz	220-240V/50Hz	220-240V/50Hz	220-240V/50Hz
Capacity 制冰量: (kg/24h) (Ambient Temp. +15°C)	110 (Water Temp. +12°C)	130/150 (Water Temp. +12°C)	220 (Water Temp. +12°C)	260 (Water Temp. +12°C)
Type of cooling 冷却方式:	Air	Air	Air	Air
Ice storage (kg) 储冰量:	25 kg/52 Litres(升)	25 kg/52 Litres(升)	50 kg/100 Litres(升)	50 kg/100 Litres(升)
Ice produce method 产冰方式	Continuously/连续出冰	Continuously/连续出冰	Continuously/连续出冰	Continuously/连续出冰
Ice cube weight 每颗冰重:	0.02~0.25g Roughly	0.02~0.25g Roughly	0.02~0.25g Roughly	0.02~0.25g Roughly
Inport Power 输入功率: (Under temperature. +43°C)	400W	460/480W	820W	920W
Rated Current 额定电流: (Under temperature. +43°C)	2.5A	2.8/2.8A	5.0A	5.6A
Product Size (WxDxH) 产品尺寸 (宽x深x高) :	500 x 612 x 900 mm	500 x 612 x 900 mm	680 x 612 x 1100 mm	680 x 612 x 1100 mm
Carton packing size(WxDxH) 纸箱包装尺寸 (宽x深x高) :	580 x 685 x 1000 mm	580 x 685 x 1000 mm	730 x 795 x 1280 mm	730 x 795 x 1280 mm
Water supply 水源: Presuure range (水压范围)	Connecting to tap water, 自来水 (0.1Mpa--0.35Mpa)	Connecting to tap water, 自来水 (0.1Mpa--0.35Mpa)	Connecting to tap water, 自来水 (0.1Mpa--0.35Mpa)	Connecting to tap water, 自来水 (0.1Mpa--0.35Mpa)
Water consumption 耗水量: (Under 0.2Mpa pressure)	0.0 (L/H) Probably	0.0 (L/H) Probably	0.0 (L/H) Probably	0.0 (L/H) Probably
N.W/G.W 净重/毛重:	49.0kg/54.0kg	53.0kg/58kg	83.0kg/104.0kg	92.0kg/112.0kg
Container Load: 装箱量: 20GP/40GP/40HC	64/136/136	64/136/136	21/44/88	21/44/88
Price (FOB Shanghai)	-----	-----	-----	-----

Brief description | 简要提示:

Air cooling products: Keep a 15cm ventilation space on both sides and backside, and do not cover the top or place it inside the cabinet for use.Clean the condenser once a year. | 左右保持15cm空间通风, 顶部上方不能遮挡, 不能放置在柜内使用,每年清洁冷凝器尘埃。

Water cooling products: Can be placed in the cabinet using, Ensure smooth drainage | 可以放置在柜内使用, 确保排水畅通。

冰爵电器科技 (苏州) 有限公司

地址: 江苏省常熟市虞山高新技术产业园, 阳光大道15号.
Email:djjcs@263.net Tel:+86 13566066627

www.cn-icewoo.com www.en.cn-icewoo.com

ICEWOO ELECTRICAL TECHNOLOGY(SUZHOU) CO., LTD.

Add:No.15,Sunshine Avenue Yushan High-Tech industrial Park,Changshu,Jiangsu,China.
Email:djjcs@263.net Tel:+86 13566066627

www.cn-icewoo.com www.en.cn-icewoo.com

FLAKE ICE MAKER | 矿物盐状碎冰制冰机



ICEWOO
冰爵电器科技



① ② ③

Ice shape:

冰的形状:



④ ⑤

Ice making method:

制冰方式:



Certificate:
相关认证:



Refrigerant
R 404A

- High-efficiency refrigerating system with refrigerant :R404A,energy conservation and enviromental | 高效制冷系统设计, R404A制冷剂, 节能环保。
- Continuous making ice by screw reamer extrusion, widely used in scientific researchlaboratory,aquatic product freshening.
| 不间断连续地用螺杆铰刀方式挤压出冰,广泛用于科学研究实验室,水产品保鲜。
- Automatic detection function, automatic protection and display of failure, extend the life of other components.
| 全自动检测功能,发生故障自动保护并显示,延长其他部件寿命。
- Product shell is made of stainless steel materials ; 304#2B | 不锈钢外壳坚固耐用。
- New advanced self-checking controller to automatically control the process from water inlet -- ice making --- ice dropping --- ice storage ---
ice full --- restart. | 从进水--制冰--脱冰--冰满停机--恢复再开机全自动控制。
- Accessory:1x Ice spoon.1 x Drain pipe.1x Tap water inlet pipe with 3/4 internal thread. | 附件: 冰勺, 进水管, 排水管各一件。

Model 型号:	①IMS-250FAIR2	②IMS-250FAWIR2	③IMS-400FBIR2	④IMS-400FBWIR2
Climate Type 气候类型:	ST (+5--38°C)	ST (+5--38°C)	ST (+5--38°C)	ST (+5--38°C)
Power supply 电源:	220-240V/50Hz	220-240V/50Hz	220-240V/50Hz	220-240V/50Hz
Capacity 制冰量: (kg/24h) (Ambient Temp. +21°C)	250 (Water Temp. +16°C)	250 (Water Temp. +16°C)	400 (Water Temp. +16°C)	400 (Water Temp. +16°C)
Type of cooling 冷却方式:	Air	Water	Air	Water
Ice storage (kg) 储冰量:	120 kg/200 Litres(升)	120 kg/200 Litres(升)	200 kg/320 Litres(升)	200 kg/320 Litres(升)
Ice produce method 产冰方式	Continuously/连续出冰	Continuously/连续出冰	Continuously/连续出冰	Continuously/连续出冰
Ice cube weight 每颗冰重:	0.02~0.25g Roughly	0.02~0.25g Roughly	0.02~0.25g Roughly	0.02~0.25g Roughly
Inport Power 输入功率: (Under temperature. +43°C)	900W	900W	1550W	1320W
Rated Current 额定电流: (Under temperature. +43°C)	5.5A	5.5A	9.5A	8.0A
Overall Product Size (WxDxH) 整机产品尺寸 (宽x深x高):	560 x 840 x 1620mm mm	560 x 840 x1620mm	760 x 840 x 1840mm	760 x 840 x 1840mm
Up-sided machine size(WxDxH) 主机尺寸 (宽x深x高):	555x570x585mm	555x570x585mm	755X570x715mm	755X570x715mm
Up-sided Carton size(WxDxH) 主机包装尺寸 (宽x深x高):	670x720x670mm	670x720x670mm	770X730x920mm	770X730x920mm
Up-side N.W/G.W 净重/毛重:	59.0kg/63.0kg	59.0kg/63.0kg	106.0kg/126.0kg	106.0kg/126.0kg
Storage cabinet size(WxDxH) 储冰箱尺寸 (宽x深x高):	560x840x905mm	560x840x905mm	760x840x970mm	760x840x970mm
Storage Carton size(WxDxH) 储冰箱包装尺寸 (宽x深x高):	640x870x930mm	640x870x930mm	820x860x980mm	820x860x980mm
Storage N.W/G.W 净重/毛重:	37/41.5kg	37/41.5kg	46/51.5kg	46/51.5kg
Water supply 水源: Presuure range (水压范围)	Connecting to tap water, 自来水 (0.1Mpa--0.35Mpa)	Connecting to tap water, 自来水 (0.1Mpa--0.35Mpa)	Connecting to tap water, 自来水 (0.1Mpa--0.35Mpa)	Connecting to tap water, 自来水 (0.1Mpa--0.35Mpa)
Water consumption 耗水量: (Under 0.2Mpa pressure)	0.0 (L/H) Probably	84.0 (L/H) Probably	0.0 (L/H) Probably	102.0 (L/H) Probably
Container Load: 装箱量: 20GP/40GP/40HC	26/54/54	26/54/54	17/36/36	17/36/36
Price (FOB Shanghai)	-----	-----	-----	-----

Air cooling products: Keep a 15cm ventilation space on both sides and backside, and do not cover the top or place it inside the cabinet for use.Clean the condenser once a year. | 左右保持15cm空间通风, 顶部上方不能遮挡, 不能放置在柜内使用,每年清洁冷凝器尘埃。

Water cooling products: Can be placed in the cabinet using, Ensure smooth drainage | 可以放置在柜内使用, 确保排水畅通。

Brief description | 简要提示:

冰爵电器科技 (苏州) 有限公司

地址: 江苏省常熟市虞山高新技术产业园, 阳光大道15号。
Email:djjcs@263.net Tel:+86 13566066627

www.cn-icewoo.com www.en.cn-icewoo.com

ICEWOO ELECTRICAL TECHNOLOGY(SUZHOU) CO., LTD.

Address:No.15,Sunshine Avenue Yushan High-Tech industrial Park,Changshu,Jiangsu,China.
Email:djjcs@263.net Tel:+86 13566066627

www.cn-icewoo.com www.en.cn-icewoo.com

DIE FORMING SHAPE OF ICE MAKER | 模型冰制冰机



①

Ice shape:
冰的形状



② ③



④

Ice making method:
制冰方式:



Certificate:
相关认证:



- High-efficiency refrigerating system with refrigerant :R290,energy conservation and enviromental | 高效制冷系统设计, R290制冷剂, 节能环保。
- Water spray circulation system to make real crastal clear ice cube | 喷淋式制冰水循环系统, 冰块晶莹剔透。
- Automatic cleaning function, the remaining water is automatically drained, clean and sanitary. | 自动清洗功能, 制冰结束后余水自动排尽, 清洁卫生。
- Product shell is made of stainless steel materials ; 304#2B | 不锈钢外壳坚固耐用。
- New advanced self-checking controller to automatically control the process from water inlet -- ice making --- ice dropping --- ice storage --- ice full --- restart. | 从进水--制冰--脱冰--储冰--冰满停机--恢复再开机全自动控制。
- Accessory:1x Ice spoon.1 x Drain pipe.1x Tap water inlet pipe with 3/4 internal thread. | 附件: 冰勺, 进水管, 排水管各一件。

Model 型号:	① IM-30PBR2	② IM-40PBR2	③ IM-50PBR2	④IM-70PBR2
Climate Type 气候类型:	T (+5--43°C)	T (+5--43°C)	T (+5--43°C)	T (+5--43°C)
Power supply 电源:	220-240V/50Hz	220-240V/50Hz	220-240V/50Hz	220-240V/50Hz
Capacity 制冰量: (kg/24h) (Ambient Temp. +15°C)	30 (Water Temp. +12°C)	40 (Water Temp. +12°C)	50/ 42 (Water Temp. +12°C)	70/ 45 (Water Temp. +12°C)
Type of cooling 冷却方式:	Air	Air	Air	Air
Ice storage (kg) 储冰量:	10 kg/25 Litres(升)	10 kg/25 Litres(升)	24kg/50 Litres(升)	48 kg/100 Litres(升)
Pieces per cycle 每模冰颗数:	24	24	32	48
Ice cube weight 每颗冰重:	22.0g Roughly	22.0g Roughly	22.0g Roughly	22.0g Roughly
Eech ice size 冰块尺寸:	33x33x32 mm Roughly	33x33x32 mm Roughly	33x33x32 mm Roughly	33x33x32 mm Roughly
Inport Power 输入功率: (Under temperature. +43°C)	420W	460W	680W	850W
Rated Current 额定电流: (Under temperature. +43°C)	2.6 A	2.8 A	4.2 A	5.2 A
Product Size (WxDxH) 产品尺寸 (宽x深x高):	398 x 512 x 776 mm	398 x 512 x 776 mm	500 x 612 x 915 mm	680 x 612 x 1050 mm
Carton packing size(WxDxH) 纸箱包装尺寸 (宽x深x高):	465 x 570 x 835 mm	465 x 570 x 835 mm	580 x 685 x 960 mm	800 x 730 x 1200 mm
Water supply 水源: Presuure range (水压范围)	Connecting to tap water, 自来水 (0.1Mpa--0.35Mpa)	Connecting to tap water, 自来水 (0.1Mpa--0.35Mpa)	Connecting to tap water, 自来水 (0.1Mpa--0.35Mpa)	Connecting to tap water, 自来水 (0.1Mpa--0.35Mpa)
Water consumption 耗水量: (Under 0.2Mpa pressure)	9.0 (L/H) Roughly	9.0 (L/H) Roughly	12.0 (L/H) Roughly	14.0 (L/H) Roughly
N.W/G.W 净重/毛重:	30.9kg/34.2kg	33.0kg/36.2kg	44.0kg/48.0kg	64.0kg/84.0kg
Container Load: 装箱量: 20GP/40GP/40HC	96/200/300	96/200/300	64/136/136	21/42/84
Price (FOB Shanghai)	-----	-----	-----	-----

Brief description | 简要提示:

Air cooling products: Keep a 15cm ventilation space on both sides and backside, and do not cover the top or place it inside the cabinet for use.Clean the condenser once a year. | 左右保持15cm空间通风, 顶部上方不能遮挡, 不能放置在柜内使用, 每年清洁冷凝器尘埃。

Water cooling products: Can be placed in the cabinet using, Ensure smooth drainage | 可以放置在柜内使用, 确保排水畅通。

冰爵电器科技 (苏州) 有限公司

地址: 江苏省常熟市虞山高新技术产业园, 阳光大道15号。
Email:djics@263.net Tel:+86 13566066627

www.cn-icewoo.com www.en.cn-icewoo.com

ICEWOO ELECTRICAL TECHNOLOGY(SUZHOU) CO., LTD.

Add:No.15,Sunshine Avenue Yushan High-Tech industrial Park,Changshu,Jiangsu,China.
Email:djics@263.net Tel:+86 13566066627

www.en.cn-icewoo.com www.cn-icewoo.com

DIAMOND SHAPE OF ICE MAKER | 模型冰制冰机



Ice shape:
冰的形状



Ice making method:
制冰方式:



Certificate:
相关认证:



- High-efficiency refrigerating system with refrigerant :R290,energy conservation and enviromental | 高效制冷系统设计，R290制冷剂，节能环保。
- Water flow down circulation system to make square ice cube | 滴淋式制冰水循环系统，方块冰型。
- Automatic cleaning function, the remaining water is automatically drained, clean and sanitary. | 自动清洗功能，制冰结束后余水自动排尽，清洁卫生。
- Product shell is made of stainless steel materials ; 304#2B | 不锈钢外壳坚固耐用。
- New advanced self-checking controller to automatically control the process from water inlet -- ice making --- ice dropping --- ice storage --- ice full --- restart. | 从进水--制冰--脱冰--储冰--冰满停机--恢复再开机全自动控制。
- Accessory:1x Ice spoon.1 x Drain pipe.1x Tap water inlet pipe with 3/4 internal thread. | 附件：冰勺，进水管，排水管各一件。

Model 型号:	① IM-30TBR2	② IM-50TBR2	③ IM-58TBR2	④IM-118TBR2
Climate Type 气候类型:	ST (+5--38°C)	ST (+5--38°C)	ST (+5--38°C)	ST (+5--38°C)
Power supply 电源:	220-240V/50Hz	220-240V/50Hz	220-240V/50Hz	220-240V/50Hz
Capacity 制冰量: (kg/24h) (Ambient Temp. +15°C)	30 (Water Temp. +12°C)	50 (Water Temp. +12°C)	58 (Water Temp. +12°C)	118 (Water Temp. +12°C)
Type of cooling 冷却方式:	Air	Air	Air	Air
Ice storage (kg) 储冰量:	8 kg/14 Litres(升)	12 kg/24 Litres(升)	13kg/27 Litres(升)	40 kg/74 Litres(升)
Pieces per cycle 每模冰颗数:	32	50	55	108
Ice cube weight 每颗冰重:	8.0g Roughly	8.0g Roughly	8.0g Roughly	8.0g Roughly
Eech ice size 冰块尺寸:	22x22x22 mm Roughly	22x22x22 mm Roughly	22x22x22 mm Roughly	22x22x22 mm Roughly
Inport Power 输入功率: (Under temperature. +43°C)	360W	420W	460W	850W
Rated Current 额定电流: (Under temperature. +43°C)	2.1 A	2.6 A	2.8A	5.2 A
Product Size (WxDxH) 产品尺寸 (宽x深x高):	354*428*637	400*432*773	500*430*798	656*675*880
Carton packing size(WxDxH) 纸箱包装尺寸 (宽x深x高):	505*430*637	476*508*806	562*502*859	770*735*920
Water supply 水源: Presuure range (水压范围)	Connecting to tap water, 自来水 (0.1Mpa--0.35Mpa)	Connecting to tap water, 自来水 (0.1Mpa--0.35Mpa)	Connecting to tap water, 自来水 (0.1Mpa--0.35Mpa)	Connecting to tap water, 自来水 (0.1Mpa--0.35Mpa)
Water consumption 耗水量: (Under 0.2Mpa pressure)	0.0 (L/H) Roughly	0.0 (L/H) Roughly	0.0 (L/H) Roughly	0.0 (L/H) Roughly
N.W/G.W 净重/毛重:	20.2kg/21.9kg	27.8kg/30.5kg	31.4kg/33.7kg	53.5kg/55.5kg
Container Load: 装箱量: 20GP/40GP/40HC	177/369/369	96/200/300	88/184/276	48/96/96
Price (FOB Shanghai)	-----	-----	-----	-----

Air cooling products: Keep a 15cm ventilation space on both sides and backside, and do not cover the top or place it inside the cabinet for use.Clean the condenser once a year. | 左右保持15cm空间通风，顶部上方不能遮挡，不能放置在柜内使用，每年清洁冷凝器尘埃。

Water cooling products: Can be placed in the cabinet using, Ensure smooth drainage | 可以放置在柜内使用，确保排水畅通。

冰爵电器科技 (苏州) 有限公司

地址: 江苏省常熟市虞山高新技术产业园, 阳光大道15号.
Email:djics@263.net Tel:+86 13566066627

www.cn-icewoo.com www.en.cn-icewoo.com

ICEWOO ELECTRICAL TECHNOLOGY(SUZHOU) CO., LTD.

Add:No.15,Sunshine Avenue Yushan High-Tech industrial Park,Changshu,Jiangsu,China.
Email:djics@263.net Tel:+86 13566066627

www.en.cn-icewoo.com www.cn-icewoo.com

DIAMOND SHAPE OF ICE MAKER | 模型冰制冰机



① ②

Ice shape:
冰的形状



③



④

Ice making method:
制冰方式:



Certificate:
相关认证:



- High-efficiency refrigerating system with refrigerant :R290,energy conservation and enviromental | 高效制冷系统设计, R290制冷剂, 节能环保。
- Water flow down circulation system to make square ice cube | 滴淋式制冰水循环系统, 方块冰型。
- Automatic cleaning function, the remaining water is automatically drained, clean and sanitary. | 自动清洗功能, 制冰结束后余水自动排尽, 清洁卫生。
- Product shell is made of stainless steel materials ; 304#2B | 不锈钢外壳坚固耐用。
- New advanced self-checking controller to automatically control the process from water inlet -- ice making --- ice dropping --- ice storage --- ice full --- restart. | 从进水--制冰--脱冰--储冰--冰满停机--恢复再开机全自动控制。
- Accessory:1x Ice spoon.1 x Drain pipe.1x Tap water inlet pipe with 3/4 internal thread. | 附件: 冰勺, 进水管, 排水管各一件。

Model 型号:	① IM-25TBR2	② IM-32TBR2	③ IM-52TBR2	④IM-80TBR2/IM-100TBR2
Climate Type 气候类型:	T (+5--43°C)	T (+5--43°C)	T (+5--43°C)	T (+5--43°C)
Power supply 电源:	220-240V/50Hz	220-240V/50Hz	220-240V/50Hz	220-240V/50Hz
Capacity 制冰量: (kg/24h) (Ambient Temp. +15°C)	25 (Water Temp. +12°C)	32 (Water Temp. +12°C)	52 (Water Temp. +12°C)	80/100 (Water Temp. +12°C)
Type of cooling 冷却方式:	Air	Air	Air	Air
Ice storage (kg) 储冰量:	10 kg/25 Litres(升)	10 kg/25 Litres(升)	24kg/50 Litres(升)	48 kg/100 Litres(升)
Pieces per cycle 每模冰颗数:	32	40	55	108/126
Ice cube weight 每颗冰重:	8.0g Roughly	8.0g Roughly	8.0g Roughly	8.0g Roughly
Eech ice size 冰块尺寸:	22x22x22 mm Roughly	22x22x22 mm Roughly	22x22x22 mm Roughly	22x22x22 mm Roughly
Inport Power 输入功率: (Under temperature. +43°C)	300W	360W	460W	780W/840W
Rated Current 额定电流: (Under temperature. +43°C)	1.8 A	2.1 A	2.8A	4.8 A /5.0A
Product Size (WxDxH) 产品尺寸 (宽x深x高) :	398 x 512 x 776 mm	398 x 512 x 776 mm	500 x 612 x 915 mm	680 x 612 x 1050 mm
Carton packing size(WxDxH) 纸箱包装尺寸 (宽x深x高) :	465 x 570 x 835 mm	465 x 570 x 835 mm	580 x 685 x 960 mm	800 x 730 x 1200 mm
Water supply 水源: Presuure range (水压范围)	Connecting to tap water, 自来水 (0.1Mpa--0.35Mpa)	Connecting to tap water, 自来水 (0.1Mpa--0.35Mpa)	Connecting to tap water, 自来水 (0.1Mpa--0.35Mpa)	Connecting to tap water, 自来水 (0.1Mpa--0.35Mpa)
Water consumption 耗水量: (Under 0.2Mpa pressure)	0.0 (L/H) Roughly	0.0 (L/H) Roughly	0.0 (L/H) Roughly	0.0 (L/H) Roughly
N.W/G.W 净重/毛重:	30.9kg/34.2kg	33.0kg/36.2kg	44.0kg/48.0kg	64.0kg/84.0kg
Container Load: 装箱量: 20GP/40GP/40HC	96/200/300	96/200/300	64/136/136	21/42/84
Price (FOB Shanghai)	-----	-----	-----	-----

Brief description | 简要提示:

Air cooling products: Keep a 15cm ventilation space on both sides and backside, and do not cover the top or place it inside the cabinet for use.Clean the condenser once a year. | 左右保持15cm空间通风, 顶部上方不能遮挡, 不能放置在柜内使用, 每年清洁冷凝器尘埃。
Water cooling products: Can be placed in the cabinet using, Ensure smooth drainage | 可以放置在柜内使用, 确保排水畅通。

冰爵电器科技 (苏州) 有限公司

地址: 江苏省常熟市虞山高新技术产业园, 阳光大道15号。
Email:djcs@263.net Tel:+86 13566066627

www.cn-icewoo.com www.en.cn-icewoo.com

ICEWOO ELECTRICAL TECHNOLOGY(SUZHOU) CO., LTD.

Add:No.15,Sunshine Avenue Yushan High-Tech industrial Park,Changshu,Jiangsu,China.
Email:djcs@263.net Tel:+86 13566066627

www.en.cn-icewoo.com www.cn-icewoo.com